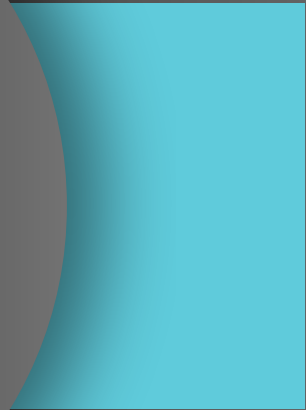


# 2025 TULSA ICON

## INFORMATION PACKET



**“A BRAND YOU TRUST, AT  
A PRICE YOU’LL LOVE!”**



**Competelconic**



**Competelconic**





# TABLE OF CONTENTS

- 1 - Event Information
- 2 - Hotel Information
- 3 - Coaches Registration
- 4 - Bids
- 5 - Warm Ups & Music
- 6 - Scoring
- 7 - Spectators
- 8 - Maps & Parking
- 9 - FAQ's
- 10 - Local Attractions
- 11 - Contact Information



# Tulsa Icon

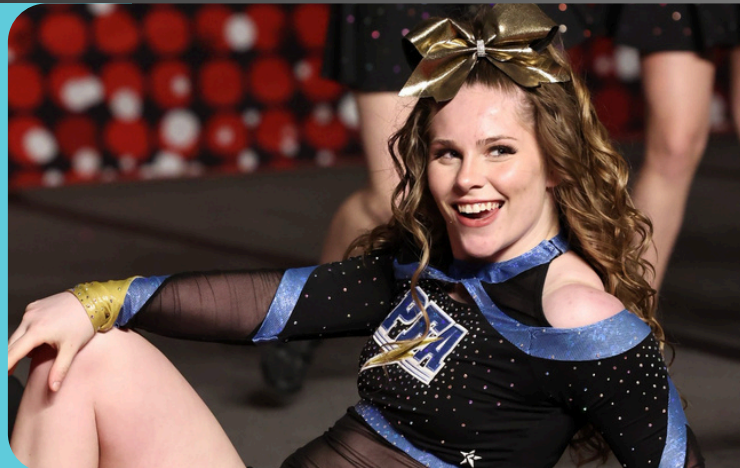
## March 8, 2025

Broken Arrow Field House  
1901 E Albany St  
Broken Arrow OK 74012



Coaches Check In Starts at 8:00 AM  
Doors open for Spectators at 8:00 AM

Vendors will be on site  
as well as a pro shop for  
all your cheer needs!



# HOST HOTEL



Hilton Garden Inn  
420 West Albany St  
Broken Arrow OK



[Tulsa Icon Housing Link](#)



918-940-8444





## COACHES ENTRY

- All athlete waivers, and any outstanding balances must be paid prior to check in
- All Background Checks must be submitted for any coach 18+
- EACH coach MUST Bring Photo ID to check in
- All Bid Intent Forms must be complete or denied at check in
- All Rosters must be final at check in



# Tulsa Icon BIDS AWARDING

4 At Large Bids to ASWC  
April 15-18, 2025  
[ASWC Info Link](#)



3 Partial Paid Bids to Open  
Prep & Rec Nationas  
[Prep & Rec Nationas Info](#)

Earn Credits for Open  
Championship Events  
[National Qualifier Info](#)



# WARM UPS & MUSIC

Everyone entering warm-ups must be in uniform or have coaching credentials properly visible.

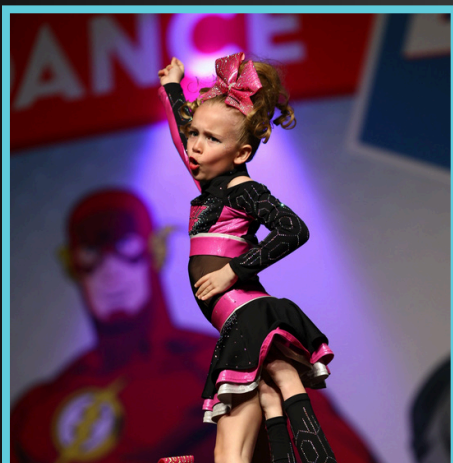
Each coach must have credentials visible at all times.

NO spectators will be permitted in warm ups.

NO CD'S for music. Please have music turned up to 100% volume and device on airplane mode.

Iconic Events will not be responsible for music interruptions due to team device error, and the team will not be permitted to perform again.

Teams are responsible for providing their own connectors / dongles for playback.



# SCORING

[Link for OPEN Scoring.](#)

[Link for UNITED Scoring.](#)

[Link for YCADA Scoring.](#)



Iconic Events may split divisions to create a more balanced competition. Splits are based on team size and D1/D2. There must be at least 2 teams in each new division to justify a split.

## Scoring Resources

[Is this Legal???](#)

[Is this Level Appropriate???](#)

[Crossover Policy.](#)

[Uniform Policy.](#)







## SPECTATORS

- Tickets can be pre-purchased or purchased at the door
- NO CASH payments accepted
- \$20 per person
- 5 and under are free
- \$50 Family Bundle of 3 tickets\*

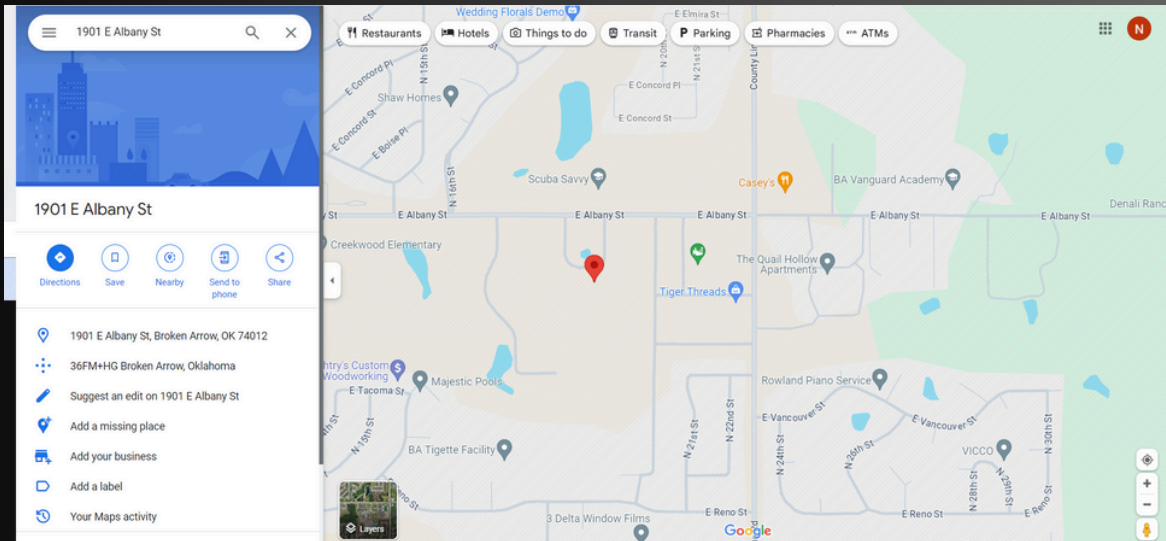
\*Must be purchased in one transaction. Non transferable and non refundable.





# MAP & PARKING

Broken Arrow Field House  
1901 E Albany St  
Broken Arrow OK 74012



# FAQ'S

Do I need to be a member of USASF?

*No, but we do follow industry standard guidelines and rules regarding competitive all-star cheer and dance.*

Do you allow noisemakers, signs and other cheer inducing objects?

*Yes, cheer as loud as you can!*

Do you offer individuals, duets, trios and stunt groups?

*Yes, we offer a variety of individual and group competition divisions in addition to our team divisions at all events.*

What is special about Iconic Events?

Iconic Events are high energy, on-time and focus on fun. Iconic Events focuses on producing great events at an affordable price!

What separates Iconic Events from other events?

*At Iconic Events we pride ourselves in our customer service. Our entire team is always available to provide the BEST experience for all shareholders!*



# LOCAL ATTRACTIONS

Military History Museum

Cinergy Escape Room

Tulsa Garden Center  
at Woodward Park

LaFortune Park



# GOT QUESTIONS?



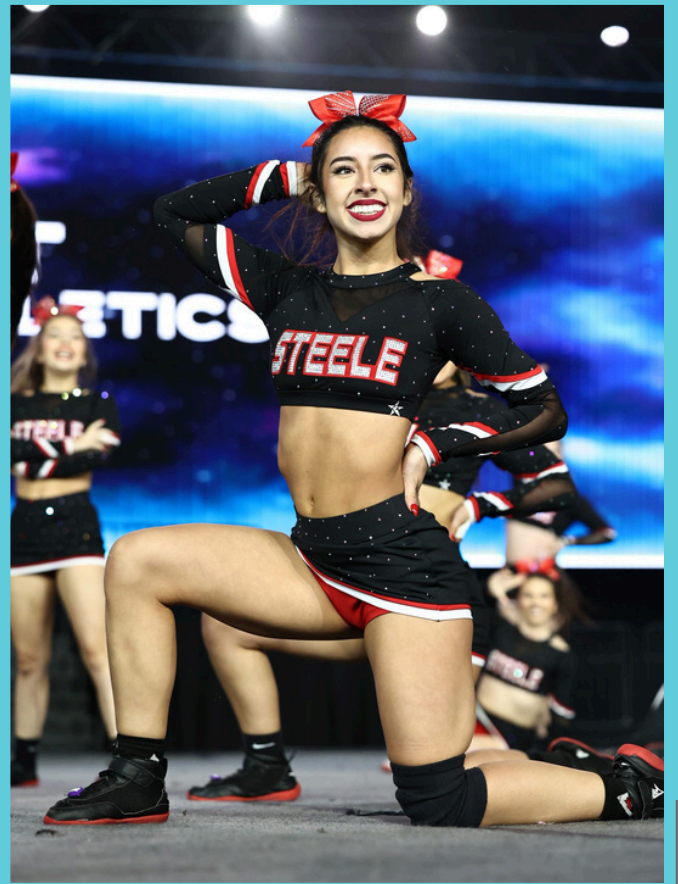
info@competeiconic.com



855.723.2247



competeiconic.com





**WE ARE SO EXCITED TO  
SEE YOU  
MARCH 8, 2025 AT THE  
TULSA ICON!!!!!!**